

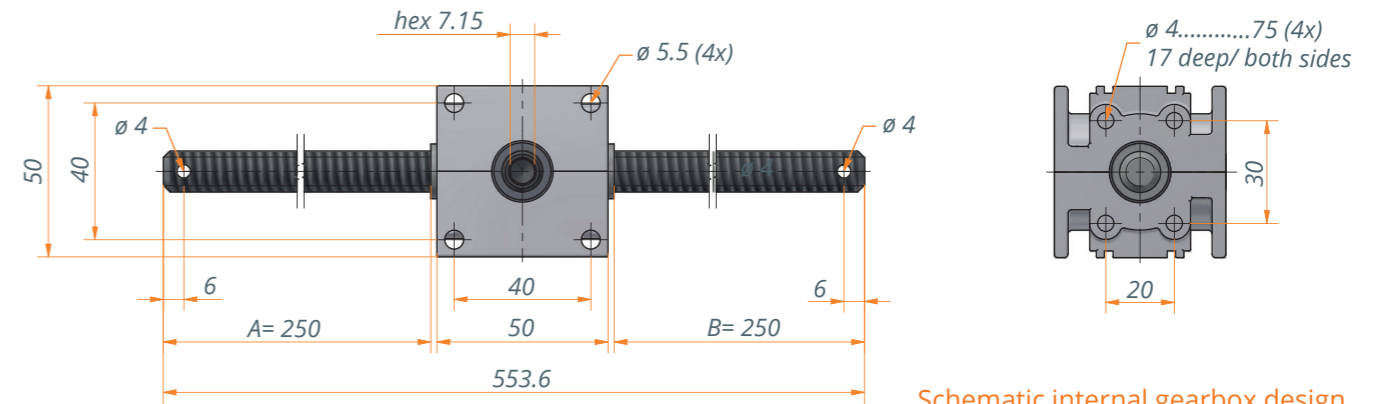
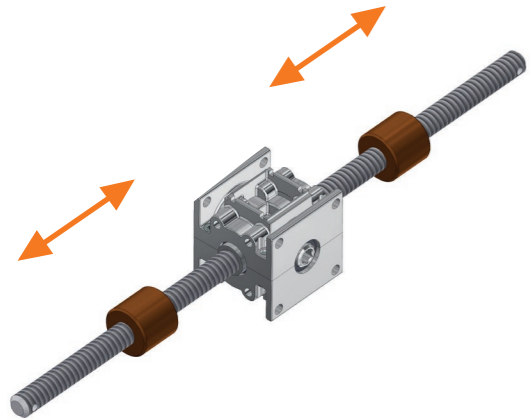
Bevel gear Ket-Flex 3872

Description

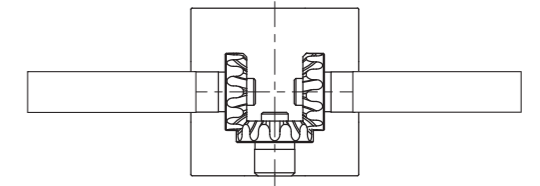
Our Ket-Flex bevel gearbox with lateral spindle output is the optimal solution for conveyor systems. It can be used for aisle adjustments, curve adjustments or for lateral guide adjustments. The side spindles allow easy adaptation to different dimensional requirements, e.g. for conveyor belts

Special features

- Maintenance-free
- Case-hardened bevel wheels
- Housing made of zinc die-casting
- Ratio $i = 1:1$
- Service life 20,000 load changes: at 10 Nm and 110 rpm with duty cycle 30 s ON 240 s OFF at +25°C
- Max. Torque 10 Nm (higher torques are possible at reduced speeds)
- Customized adaptations of the spindle length and the spindle type are possible

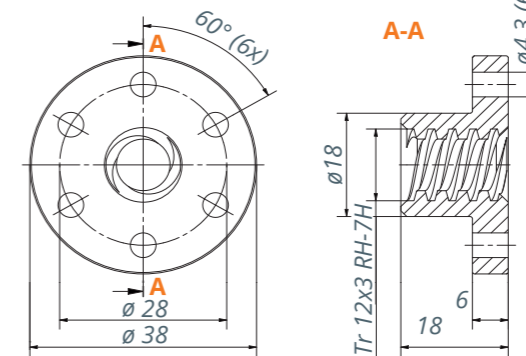
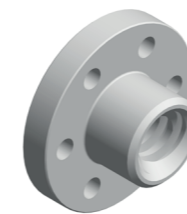


Schematic internal gearbox design



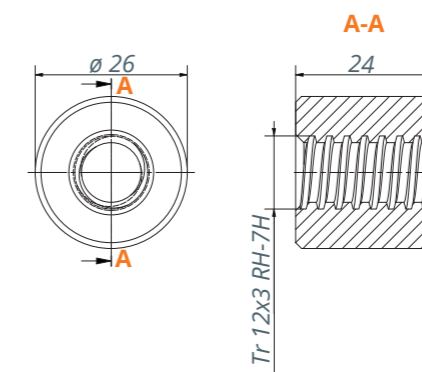
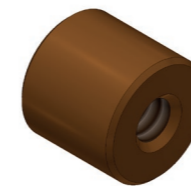
Matching Spindle nut

Flange nut 13515.20-10



Material: POM-C
Type of spindle: TR 12x3 RH

Round nut 12502.00-02



Material: Special brass
Type of spindle: TR 12x3 RH

Technical data

Preferred variant	3872.00-0077
Number of bevel gears	3
Material Spindle*	1.0715 (11SMn30)
Type of spindle*	Tr12x3 RH
Length A*	250 mm
Length B*	250 mm

* The features can be customized according to customer specifications, as well as the spindle end machining.

- The spindle nuts can be manufactured individually according to customer specifications